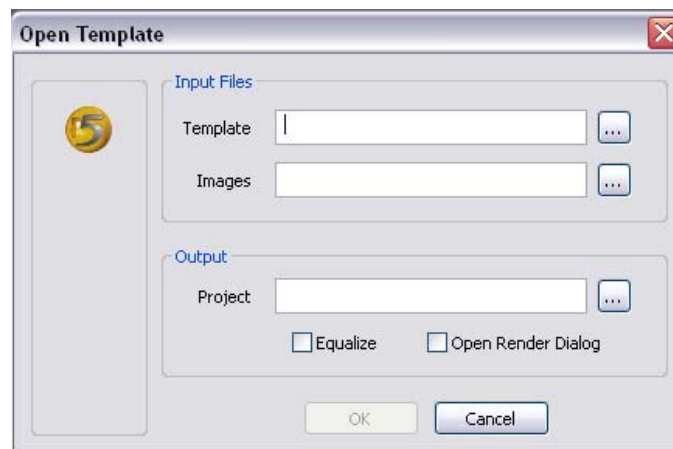


Using Templates in REALVIZ Stitcher

Using templates to stitch your panorama's together can be extremely advantageous and a time-saving technique for the pano-junky. Even if you are still left with some minor corrections after its use, the workload it has just performed for you can not be denied.

1. To begin with, we need to already have a stitched panorama or sphere in place.
 - a. You can either open a previously stitched scene with **File > Open**.
 - b. Or you can Load Images and begin stitching the normal method.
2. When you are finished stitching or opening your previously stitched scene, it is as simple as clicking **File > Save as Template**.
3. Type in the desired template name in the **File name** field.
4. Browse to the desired directory in the **Save in** drop-down menu.
5. Click **Save**.
6. Now that we have our template set up we can put it to use. An important thing to remember is that in order for this template to work, you have to shoot your panorama's the same way every time. This means the same number of shots and the same number of rows. So it might be convenient for you to use a naming convention describing the templates parameters.
7. Start by doing **File > Open Template**.



This is the dialog box that will appear.

8. In the **Template** field, browse to the location of the previously saved template.
9. For the **Image**, we need only load the first image of the panorama as long as the following images are labeled in incremental order.

10. The **Project** is for telling Stitcher where to save the outputted scene.
11. Lastly we have two more options.
 - a. If you'd like Stitcher to balance the brightness throughout the images, check **Equalize**.
 - b. If you'd like to render the image immediately after creation, check **Open Render Dialog**. However, I don't recommend this as you will want to look over any possible corrections you can make within Stitcher first.