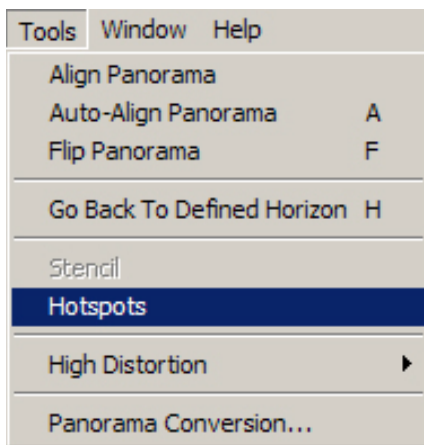


Stitcher Hotspots Info Sheet

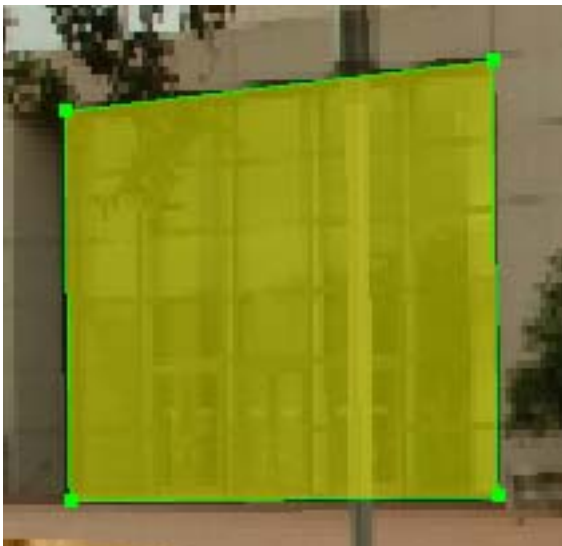
By: Becky McDowell

Stitcher Hotspots are areas that you are able to click on that will send you to another panorama or a link such as a website. With hotspots you have the ability to create a virtual tour of an area or areas. Below I will give you a step-by-step tutorial on how to create, and link the hotspots.

1. First to be able to create a hotspot, you need to open the hotspot tool.



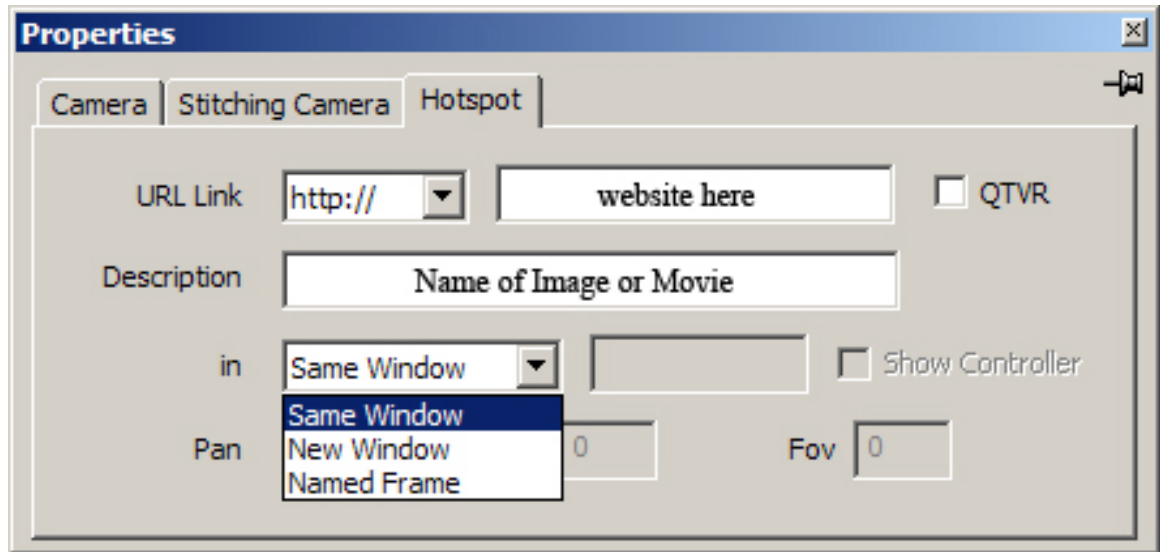
2. After you have opened up the hotspot tool, you will get an arrow with a yellow star by it. You then double-click to start the shape, click once to put down a vertex, and then double-click again to close the shape.



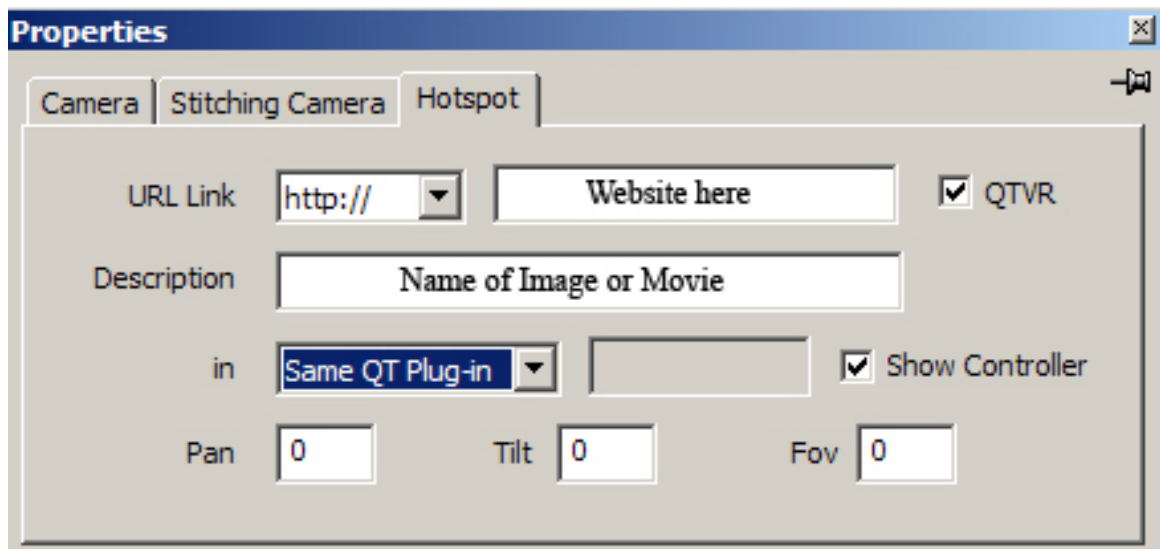
3. After creating your hotspot you want to be able to link it to something else. In order to link your hotspots, you need to first select your hotspot by clicking on the shape. Next you need to click on:

-Edit→Properties

-Click on Hotspot Tab



The pull down options for **in** deal with opening the sphere or panorama in a Web browser. It is asking you if you would like to open in it the same window, a new window, or open it in a specified frame of your Web browser. If you click on the box to make your panorama or sphere a QuickTime VR movie, you will get more options on controlling your movie that will be linked to a specific location.



On the **in** pull down options, you will have two more options after you click on the QTVR box. The first will be **Same QT Plug-in**, which will open the movie in the same area to which it was placed. The second option is **New QT Player** that

will open the movie in a new player window. Another option is the **Show Controller** box. After checking the box you can then set the Pan, Tilt, and Field of View of the QuickTime Movie. Set the Pan between -180 and 180, set the tilt between -90 and 90, and set the FOV between 5 and 180.

4. To include your panorama or sphere on your website, you have to link it correctly by using an <EMBED> HTML tag on your Html page. An example of that tag is shown below:

```
<EMBED SRC="color_trans3.mov" WIDTH=427 HEIGHT=256  
CONTROLLER=true LOOP=false AUTOPLAY=false></EMBED>
```